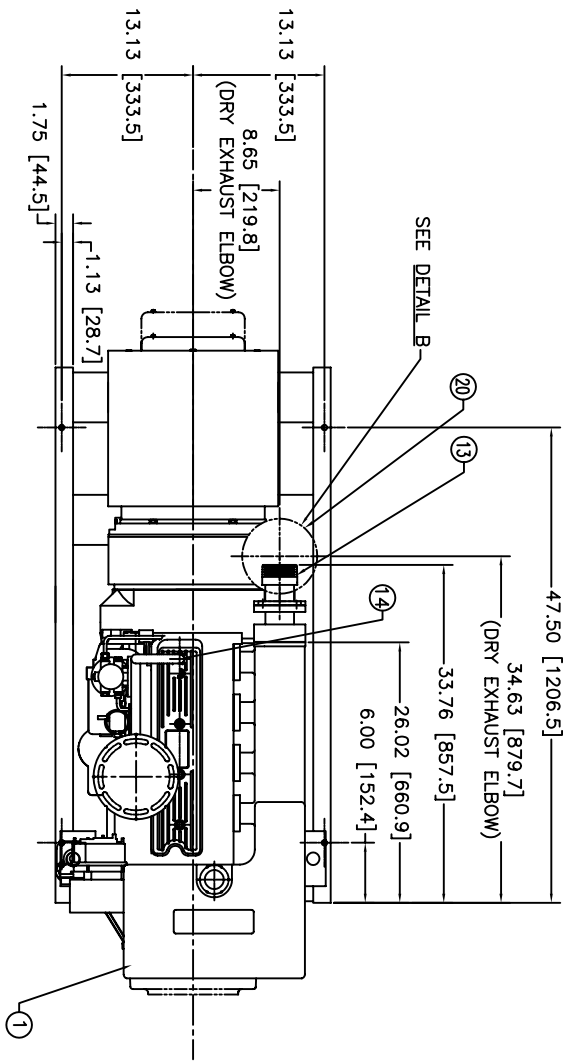


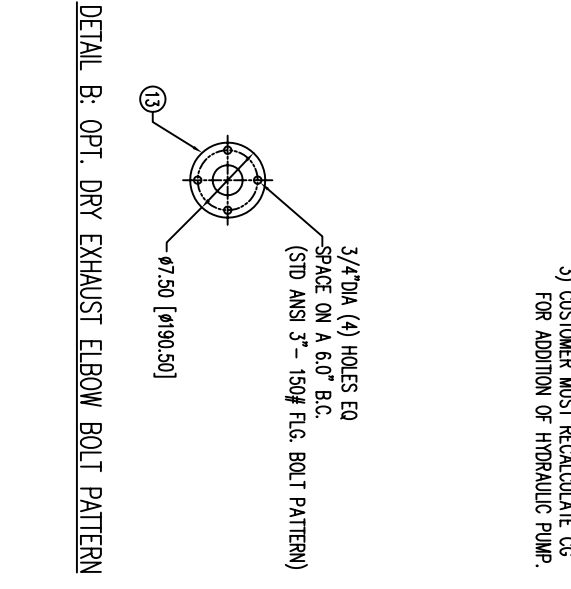
MODELS	APPROX. WT. lbs (kg)	CENTER of GRAVITY in (mm)			CENTER of GRAVITY WITH PMG.		
		A	B	C	A	B	C
MP40C2.25 1800 RPM 60Hz 40kW 3#	1862 (845)	5.10 (130)	2.5 (63.5)	2.0 (50.8)	4.6 (117)	2.5 (63.5)	2.0 (50.8)

NOTE:
1) CENTER OF GRAVITY VALUES DO NOT INCLUDE PTO/CLUTCH ASSY.
2) PTO ADAPTER/CLUTCH ASSY (ONLY) WEIGHTS APPROX. 96lbs (43.5 kg)
3) CUSTOMER MUST RECALCULATE CG FOR ADDITION OF HYDRAULIC PUMP.

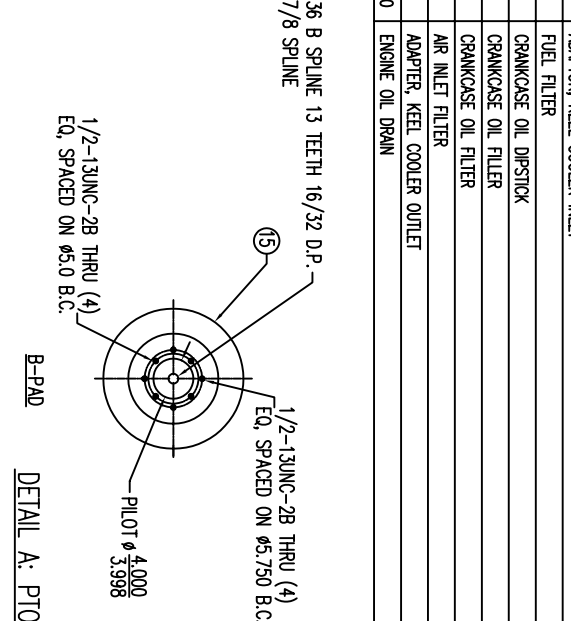
ITEM	DESCRIPTION	ITEM	DESCRIPTION
1	EXPANSION TANK	11	CENTERMOUNT MOUNT
2	COOLANT FILL	12	ALTERNATE DIPSTICK LOCATION (OPTION)
3	ADAPTOR KEEL COOLER INLET	13	DRY EXHAUST ADAPTER 3" NPT MALE STANDARD
4	FUEL FILTER	14	CLOSED CRANKCASE VENTILATION SYSTEM
5	CRANKCASE OIL DIPSTICK	15	PTO/CLUTCH - STD MFG FACE SAE J744C, B OR C 2 OR 4 BOLT (OPTION)
6	CRANKCASE OIL FILTER	16	PMG COVER - (OPTION, AS REQUIRED)
7	CRANKCASE OIL FILTER	17	FUEL INLET
8	AIR INLET FILTER	18	FUEL RETURN
9	ADAPTOR KEEL COOLER OUTLET	19	CONNECTION FOR WATER HEATER B= HOT WATER OUT A= RETURN TO ENGINE.
10	ENGINE OIL DRAIN	20	DRY EXHAUST ELBOW 3" 150# FLANGE, OPTIONAL



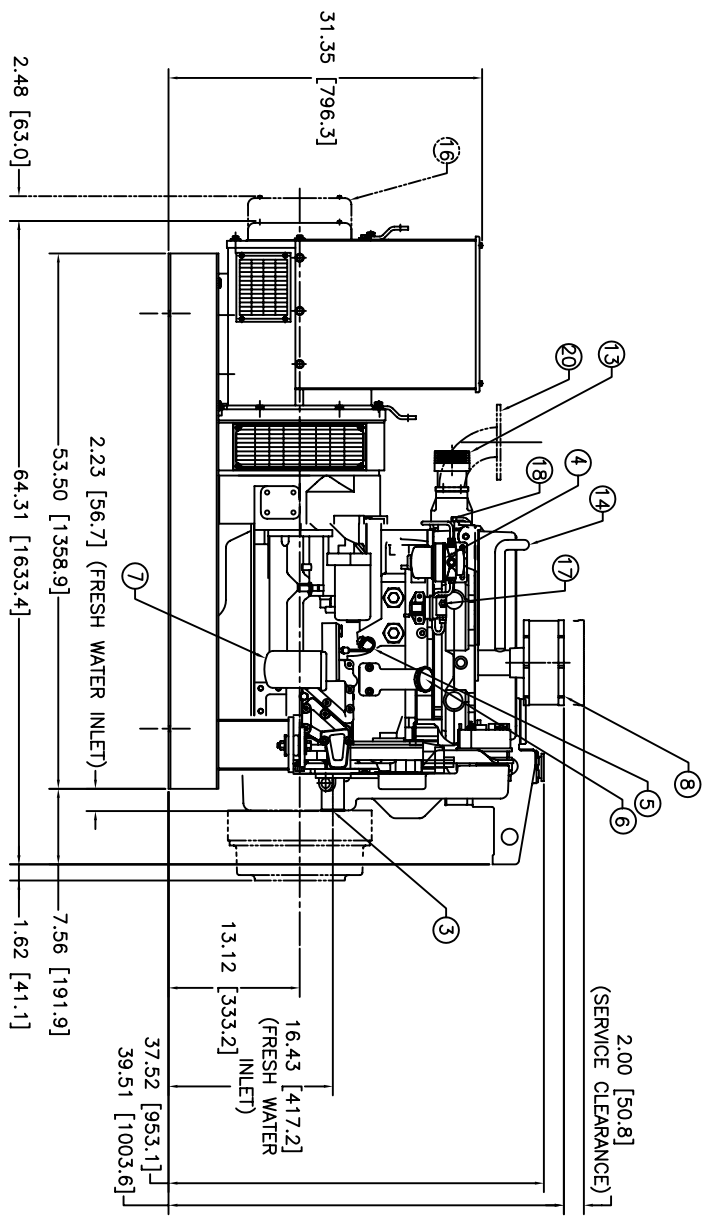
PLAN VIEW



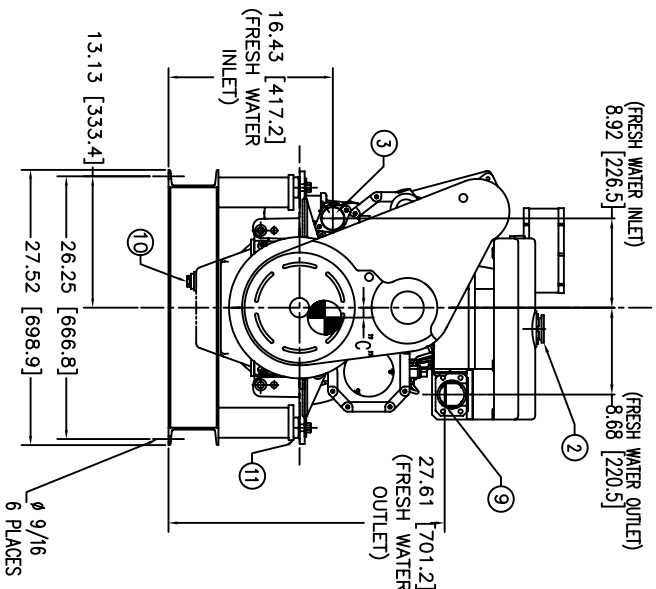
DETAIL B. OPT. DRY EXHAUST ELBOW BOLT PATTERN



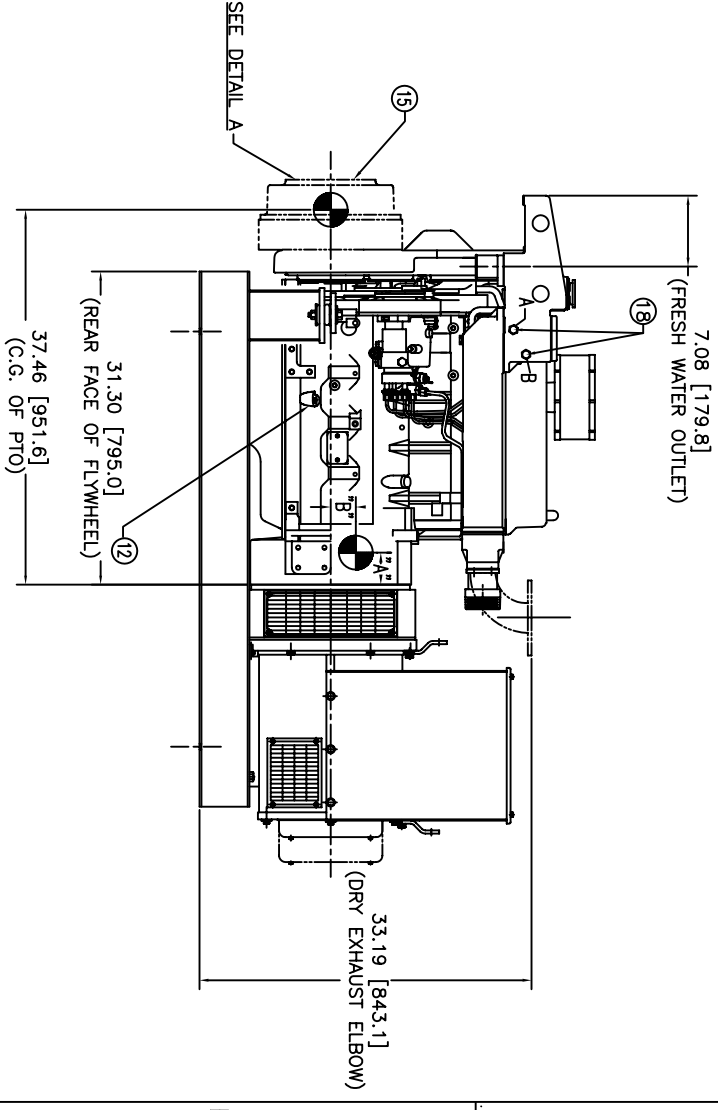
DETAIL A. PTO PAD BOLT PATTERN OPTIONS



R.H. SIDE ELEVATION



FRONT ELEVATION



L.H. SIDE ELEVATION

THE DIMENSIONS ON THIS DRAWING ARE SUBJECT TO CHANGE PLEASE CONTACT ADE TO BE SURE YOU HAVE THE MOST CURRENT REVISION.

SYMBOL	DATE	DESCRIPTION	BY	CHECKED

ALASKA DIESEL ELECTRIC
4420 14th AVE. N.W., P.O. BOX 70543
SEATTLE, WA 98107 (206) 789-3880

INSTALLATION DIMENSIONS
MP40C2.25 (M1064D)/C02240161, 40kW 3# 60Hz 1800RPM
SCALE: 1:10 (.1" = 1")
DWG. NO.: D-3982