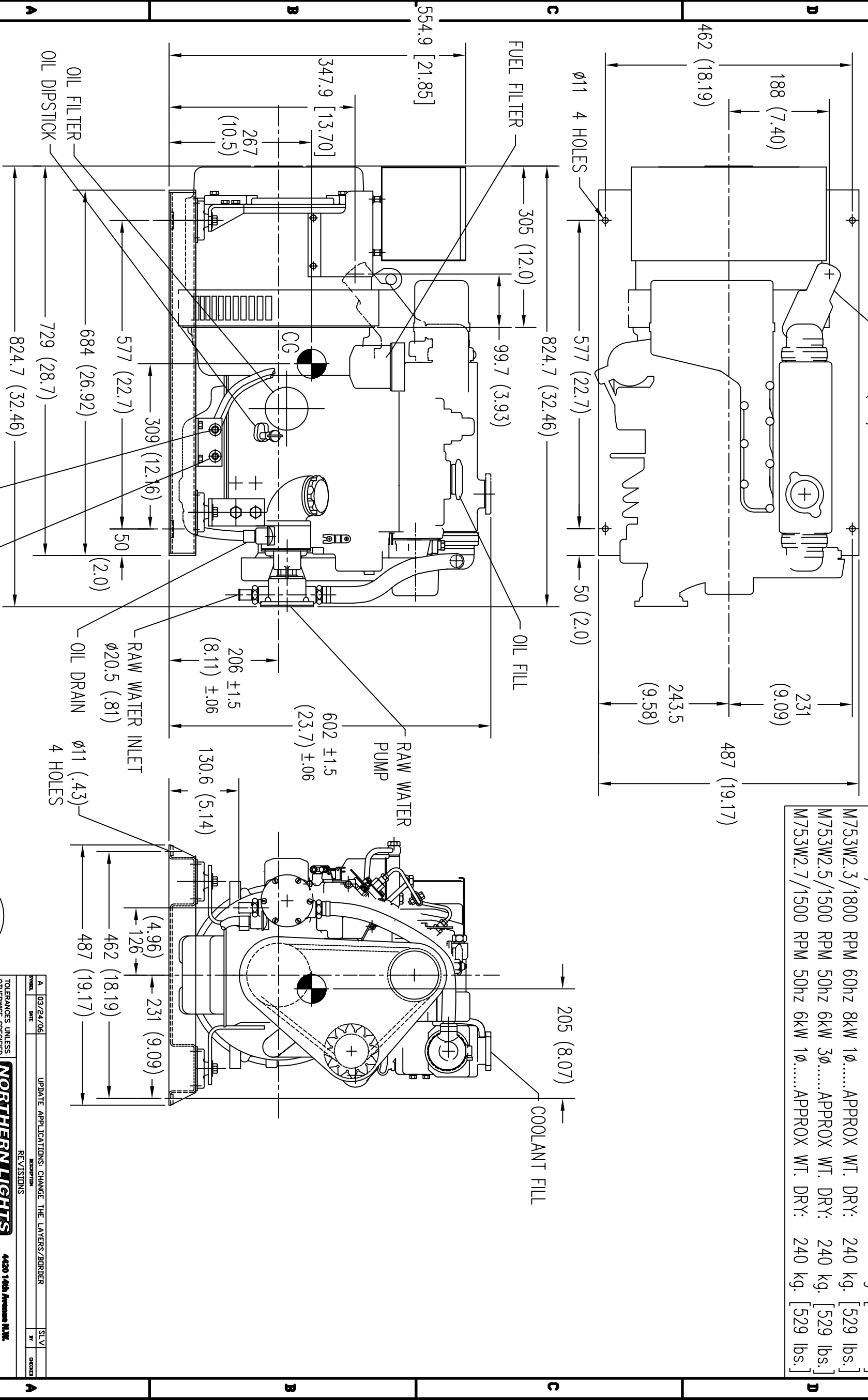


THIS OUTLINE APPLIES TO THE FOLLOWING MODELS:

M753W2.1/1800 RPM 60hz 8kW 3Ø.....	APPROX WT. DRY:	240 kg.	[529 lbs.]
M753W2.3/1800 RPM 60hz 8kW 1Ø.....	APPROX WT. DRY:	240 kg.	[529 lbs.]
M753W2.5/1500 RPM 50hz 6kW 3Ø.....	APPROX WT. DRY:	240 kg.	[529 lbs.]
M753W2.7/1500 RPM 50hz 6kW 1Ø.....	APPROX WT. DRY:	240 kg.	[529 lbs.]



THE DIMENSIONS ON THIS DRAWING ARE SUBJECT TO CHANGE. PLEASE CONTACT ADE TO BE SURE YOU HAVE THE MOST CURRENT REVISION.



NO.	DATE	REVISIONS	BY	CHECKED
A	03/24/06	UPDATE APPLICATIONS, CHANGE THE LAYERS/BORDER	SLV	

**NORTHERN LIGHTS**  
4420 14th Avenue N.W.  
Seattle, WA 98107  
(206) 799-9999  
www.northern-lights.com

TOLERANCES UNLESS OTHERWISE SPECIFIED:  
XX:  $\pm .3$   
XXX:  $\pm .1$   
ANGULAR:  $\pm 1.0$

CAD: REUSE ON CAD ONLY  
THIRD ANGLE PROJECTION  
SCALE: 1/5  
SHEETS: 1 OF 1  
LIMITS OF MEASUREMENT: MM (IN)

TITLE: INSTALLATION DIMENSIONS  
M753W2/PY308K2  
DWG. NO.: C-5790  
REV: A