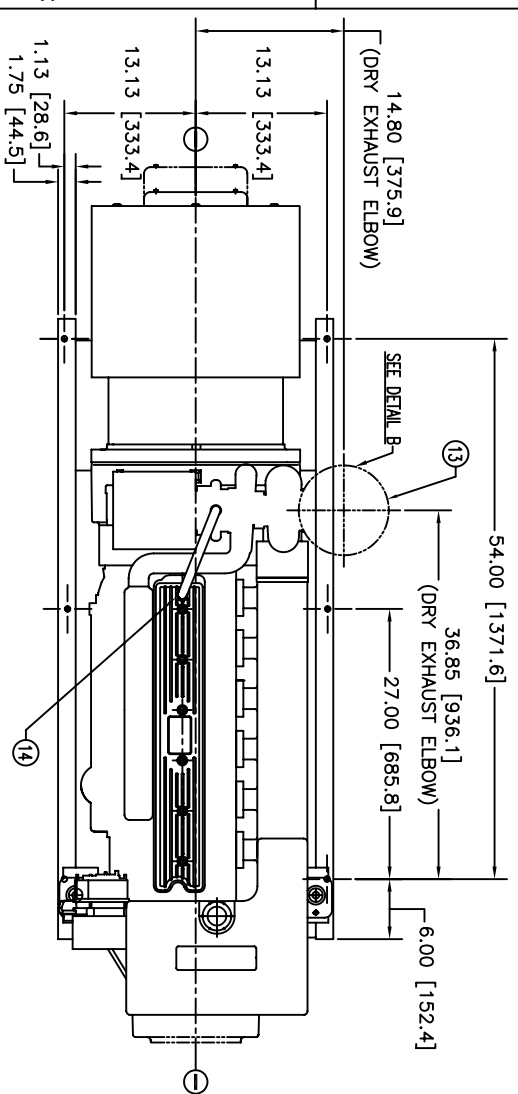


MODELS	APPROX WT. lbs (kg)	CENTER of GRAVITY In(mm)			CENTER of GRAVITY WITH PMG		
		A	B	C	A	B	C
M99C2 1800 RPM 60Hz 99kW 3ø	2500 (1134)	7.6 (193)	2.5 (64)	2.0 (51)	7.1 (180)	2.5 (64)	2 (51)

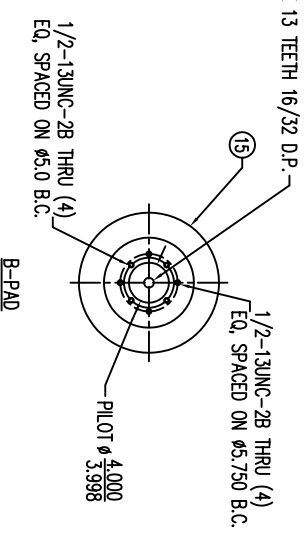
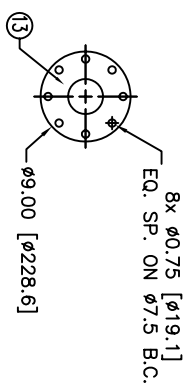
NOTE:
 1) CENTER OF GRAVITY VALUES DO NOT INCLUDE PTO/CLUTCH ASSY.
 2) PTO ADAPTER/CLUTCH ASSY (ONLY) WEIGHTS APPROX. 96lbs (43.5 kg)
 3) CUSTOMER MUST RECALCULATE CG FOR ADDITION OF HYDRAULIC PUMP.

ITEM	DESCRIPTION	ITEM	DESCRIPTION
1	EXPANSION TANK	11	CENTERBONDED MT.
2	COOLANT FILL	12	ALTERNATE DISK/LOC. LOCATION (OPTION)
3	ADAPTER KEEL COOLER INLET Ø2.25	13	OPTIONAL DRY EXHAUST ELBOW 3" STD. FIG
4	FUEL FILTER	14	CLOSED CRANKCASE VENTILATION SYSTEM
5	CRANKCASE OIL DIPSTICK	15	PTO/CLUTCH STD. MFG. FACE, SAE J744G, B OR C OR 2 OR 4 BOLT (OPTION)
6	CRANKCASE OIL FILTER	16	PMG COVER (OPTION)
7	CRANKCASE OIL FILTER	17	FUEL INLET: 3/8" FNPT
8	AIR INLET FILTER	18	FUEL RETURN: 1/4" M. 37-1 JIC
9	ADAPTER KEEL COOLER OUTLET Ø2.25	19	CONNECTION FOR WATER HEATER B= HOT WATER OUT A= RETURN TO ENGINE.
10	ENGINE OIL DRAIN 1/2" NPT		

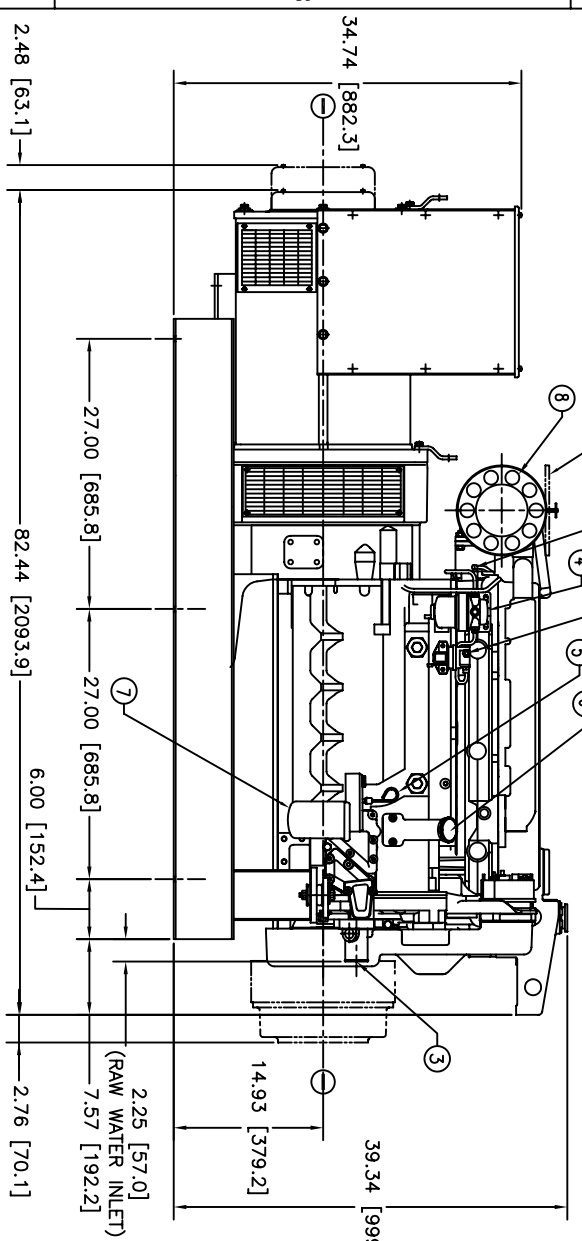


PLAN VIEW

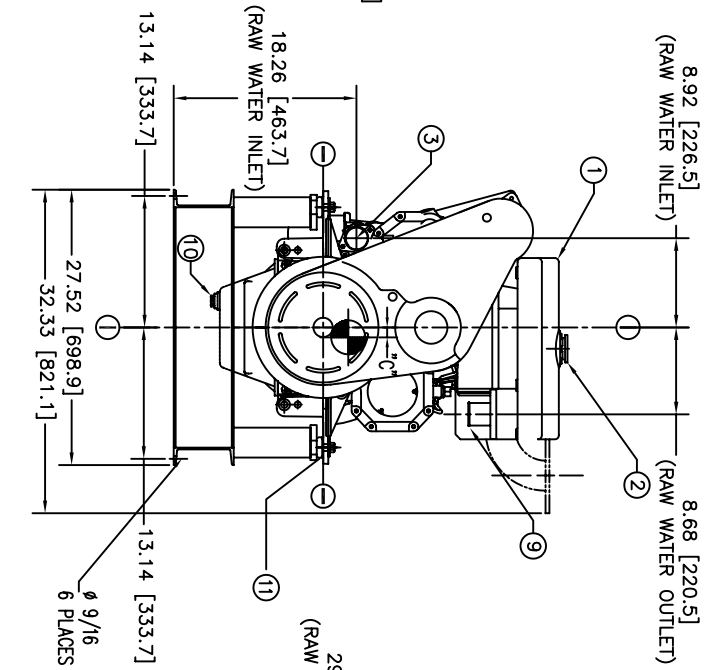
DETAIL B: DRY EXHAUST ELBOW BOLT PATTERN



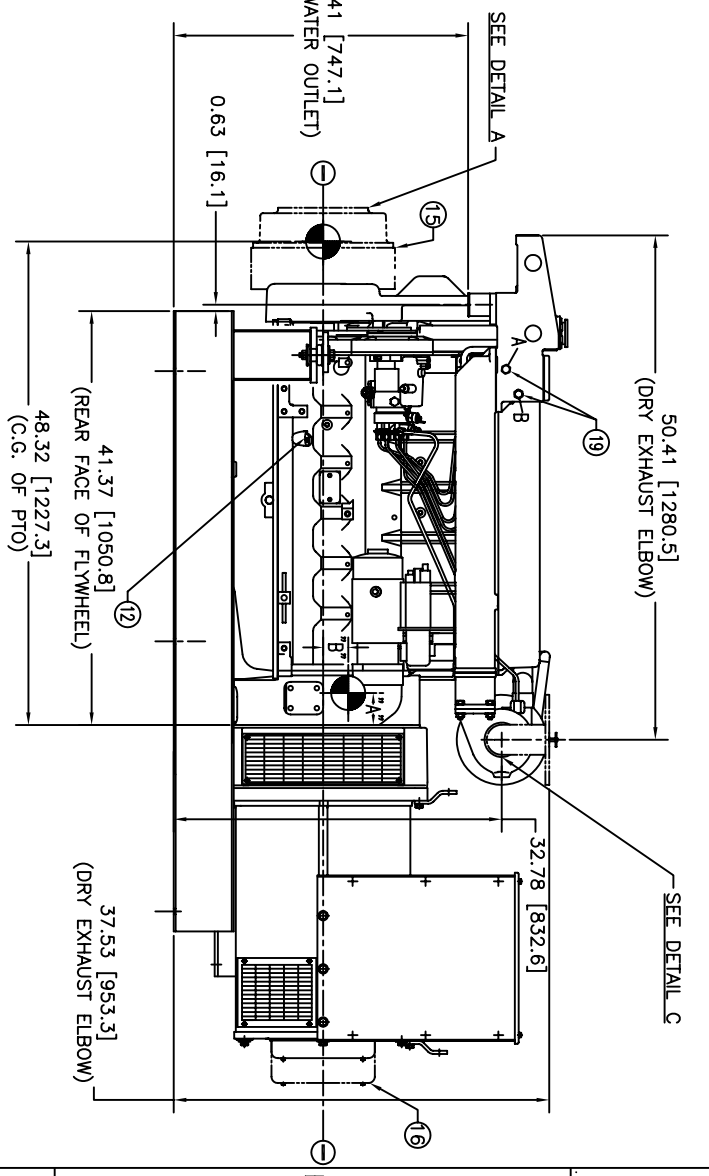
DETAIL A: PTO PAD BOLT PATTERN OPTIONS



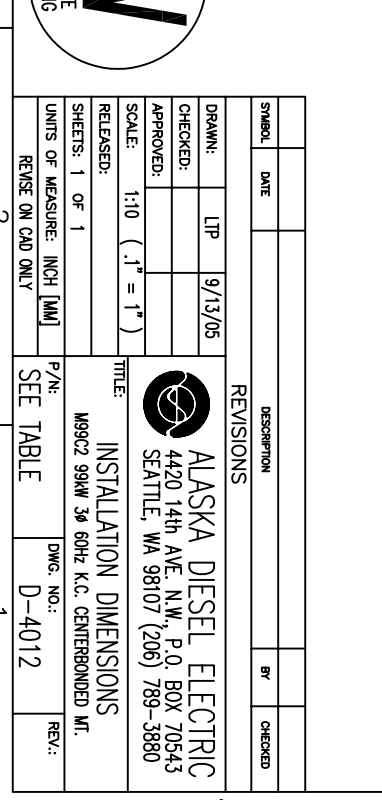
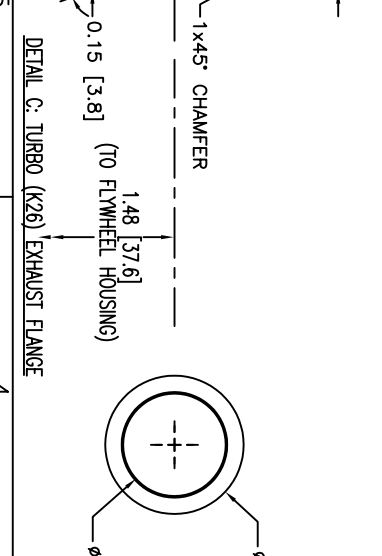
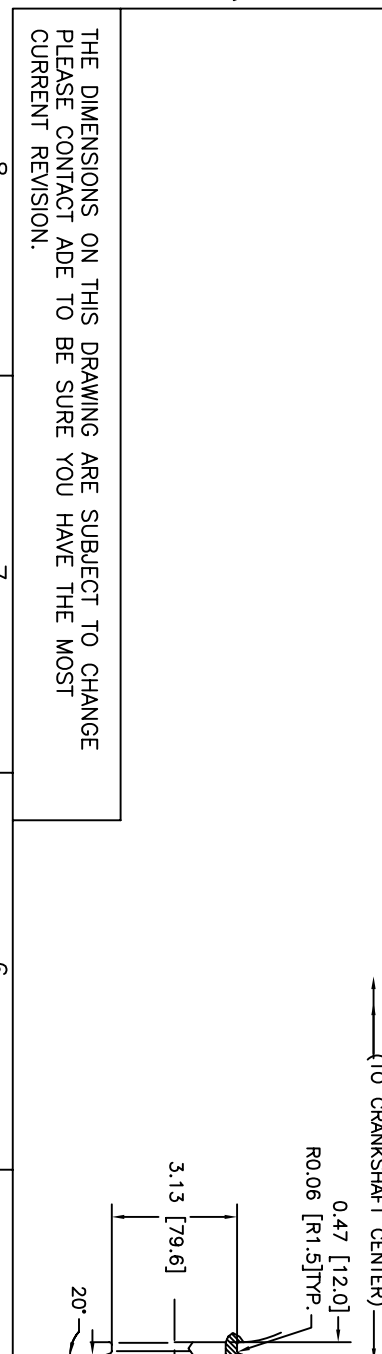
FRONT ELEVATION



DETAIL C: TURBO (K26) EXHAUST FLANGE



R.H. SIDE ELEVATION



THE DIMENSIONS ON THIS DRAWING ARE SUBJECT TO CHANGE PLEASE CONTACT ADE TO BE SURE YOU HAVE THE MOST CURRENT REVISION.



SYMBOL	DATE	DESCRIPTION	BY	CHECKED
		REVISIONS		
DRAWN:	LTP	9/13/05		
CHECKED:				
APPROVED:				
RELEASED:				
SHEETS: 1 OF 1				
UNITS OF MEASURE: INCH [MM]				
SCALE: 1:10 (.1" = 1")				
TITLE:	INSTALLATION DIMENSIONS			
P/N:	M99C2 99AW 3ø 60Hz K.C. CENTERBONDED MT.			
DWG. NO.:	D-4012			
REV.:				

ALASKA DIESEL ELECTRIC
 4420 14th AVE. N.W., P.O. BOX 70543
 SEATTLE, WA 98107 (206) 789-3880